

OLIVE ANNEXE

Explore this delightful 3-bedroom, 1-bathroom unit with 80 m² of well-planned living area. Perfect for families or individuals desiring a comfortable, practical home environment.



Product Name	OLIVE
Category	Annexe
Size	W 13.0x7.7m H 4.7m
Roof area	100.6 m ²
Living space	80.9 m ²
Insulation	Insulated A+ SIPS 174mm SIPS 274mm
Product type	Self Build KIT



EXCELLENT INSULATION

The insulation capacity is elevated by up to 50% compared to conventional building materials



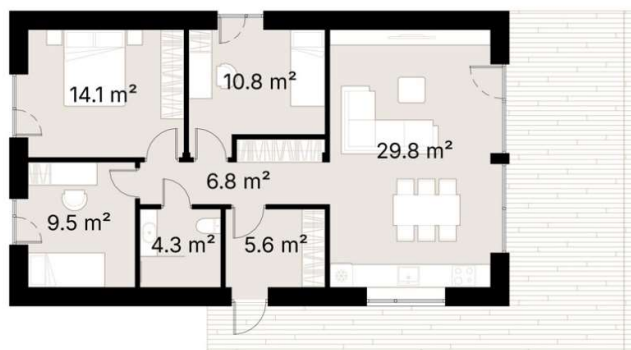
PREMIUM MATERIALS

Our KITs are comprised of top-tier components and materials, ensuring superior quality and finishes



SUSTAINABILITY

Our KITs are made from renewable materials and produce less waste than traditional construction methods



Discover this charming 3-bedroom, 1-bathroom annex, offering 80 m² of thoughtfully designed living space. Ideal for families or individuals seeking a cozy and functional residence.

The 29.8 m² living room is the focal point of the annex, boasting large windows that bring in plenty of natural light and provide a connection to the outdoors. The adjoining kitchen is efficiently designed, ensuring that meal preparation and dining are enjoyable and convenient.

The three bedrooms are well-sized, with the largest being 14.1 m². Each room provides a peaceful retreat, perfect for rest and relaxation or for use as a home office or guest room.

The single bathroom is conveniently located and designed for practicality, ensuring comfort without compromising space.

Adding to the appeal is a terrace directly accessible from the living room, creating an extended living space that is perfect for outdoor dining, relaxation, and entertainment.

Whether you're seeking a peaceful retreat or a comfortable family home, this annex combines style and functionality for a truly exceptional living experience.

SPECIFICATION

Dimensions	W 13.0x7.7m H 4.7m
Category	Annexe
Roof area	100.6 m ²
Living space	80.9 m ²
Exterior Walls	SIPS 174mm, EPS Carbon treated, 0,031 W/mK, OSB3
Roof structure	SIPS 274mm, EPS Carbon treated, 0,031 W/mK, OSB3
Internal walls	-
Windows / doors	PVC Double-glazed, 6-chamber profile, Anthracite grey (both sides)
Roof cover	Metal roofing including fasteners and steel guttering, Anthracite grey
Exterior trim	Natural Pine/Spruce trim, sanded to a smooth finish Low-maintenance Thermowood Pine/Spruce trim, sanded to a smooth finish (optional) T&G Low-maintenance Iron Sulphate coated Larch timber cladding (optional)
Breathable membrane	DuPont™ Tyvek® Housewrap
Exterior sills	Steel, Anthracite grey
Parapet Flashing	-
Interior covering / Flooring / Skirting / Interior sills	-
Foundation (not included)	Any type of foundation can be used: Concrete Pad / Concrete Base / Ground Screw / etc.
Water Supply and Sewerage, Electrical installation, HVAC (not included)	Any type of Water Supply /Sewerage, Electrical installation, HVAC systems must be done ensuring local requirements