

CHERRY ANNEXE

Experience cozy living in this 2-bedroom, 1-bathroom annex with 47 m² of space, featuring a bright living area, functional kitchen, and versatile design.



Product Name	CHERRY
Category	Annexe
Size	W 10.4x5.5m H 4.6m
Roof area	57.8 m ²
Living space	47.5 m ²
Insulation	Insulated A+ SIPS 174mm SIPS 224mm
Product type	Self Build KIT



EXCELLENT INSULATION

The insulation capacity is elevated by up to 50% compared to conventional building materials



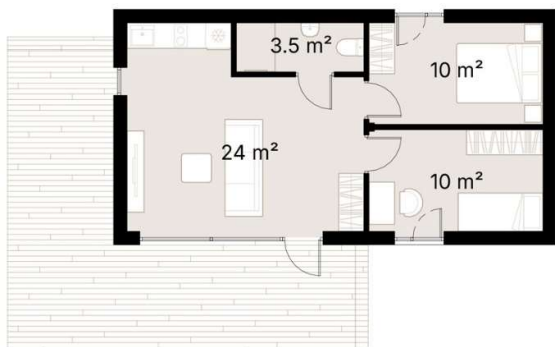
PREMIUM MATERIALS

Our KITs are comprised of top-tier components and materials, ensuring superior quality and finishes



SUSTAINABILITY

Our KITs are made from renewable materials and produce less waste than traditional construction methods



Experience the cozy charm of this 2-bedroom, 1-bathroom annex, encompassing 47 m² of well-planned living space—perfect for singles, couples, or small families.

The spacious 24.8 m² living area is bathed in natural light from large windows, creating a bright, open atmosphere that seamlessly connects to the outdoors. The open-concept design includes a compact, yet highly functional kitchen ideal for cooking casual meals.

Each bedroom provides a peaceful retreat, designed for ultimate relaxation and comfort. The compact bathroom is thoughtfully designed to offer a practical space that covers all your essential needs.

This annex combines style with practicality, delivering a cozy and versatile living environment that adapts to your lifestyle.

SPECIFICATION

Dimensions	W 10.4x5.5m H 4.6m
Category	Annexe
Roof area	57.8 m ²
Living space	47.5 m ²
Exterior Walls	SIPS 174mm, EPS Carbon treated, 0,031 W/mK, OSB3
Roof structure	SIPS 224mm, EPS Carbon treated, 0,031 W/mK, OSB3
Internal walls	-
Windows / doors	PVC Double-glazed, 6-chamber profile, Anthracite grey (both sides)
Roof cover	Metal roofing including fasteners and steel guttering, Anthracite grey
Exterior trim	Natural Pine/Spruce trim, sanded to a smooth finish Low-maintenance Thermowood Pine/Spruce trim, sanded to a smooth finish (optional) T&G Low-maintenance Iron Sulphate coated Larch timber cladding (optional)
Breathable membrane	DuPont™ Tyvek® Housewrap
Exterior sills	Steel, Anthracite grey
Parapet Flashing	-
Interior covering / Flooring / Skirting / Interior sills	-
Foundation (not included)	Any type of foundation can be used: Concrete Pad / Concrete Base / Ground Screw / etc.
Water Supply and Sewerage, Electrical installation, HVAC (not included)	Any type of Water Supply /Sewerage, Electrical installation, HVAC systems must be done ensuring local requirements