

PEACH ANNEXE

Discover this 3-bedroom, 1.5-bathroom annexe with 102 m² of space, a spacious living area, versatile bedrooms, and modern design—ideal for families or extra annexe.



Product Name	PEACH
Category	Annexe
Size	W 16.7x8.4m H 4.1m
Roof area	140.9 m ²
Living space	101.8 m ²
Insulation	Insulated A+ SIPS 174mm SIPS 224mm
Product type	Self Build KIT



EXCELLENT INSULATION

The insulation capacity is elevated by up to 50% compared to conventional building materials



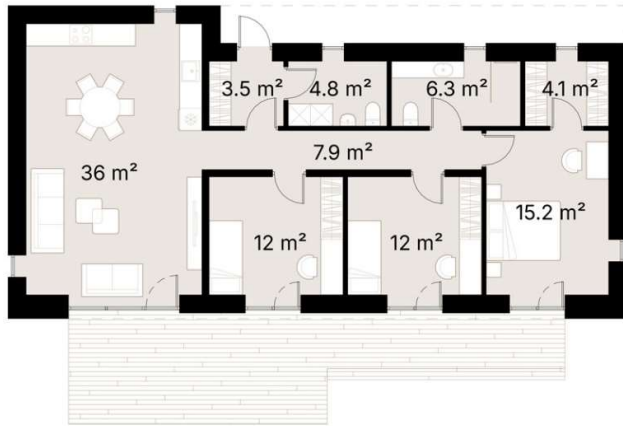
PREMIUM MATERIALS

Our KITs are comprised of top-tier components and materials, ensuring superior quality and finishes



SUSTAINABILITY

Our KITs are made from renewable materials and produce less waste than traditional construction methods



Explore the generous space of this 3-bedroom, 1.5-bathroom annex, offering 102 m² of thoughtfully designed living space—perfect for growing families or those seeking extra room.

The expansive 36 m² living room serves as the central hub of the home, featuring large windows that bathe the area in natural light and provide delightful views of the surroundings. The open-plan kitchen and dining area are designed to facilitate easy meal preparation and social gatherings.

The three bedrooms are spacious and versatile, with the master bedroom providing a tranquil 15.2 m² retreat, complete with a walk-in closet for ample storage. The additional bedrooms are ideal for children, guests, or a home office.

With 1.5 modern bathrooms, this annex ensures comfort and convenience for every resident. Combining ample space with stylish design, this home offers a flexible and comfortable living environment that adapts to your needs.

SPECIFICATION

Dimensions	W 16.7x8.4m H 4.1m
Category	Annexe
Roof area	140.9 m ²
Living space	101.8 m ²
Exterior Walls	SIPS 174mm, EPS Carbon treated, 0,031 W/mK, OSB3
Roof structure	SIPS 224mm, EPS Carbon treated, 0,031 W/mK, OSB3
Internal walls	-
Windows / doors	PVC Double-glazed, 6-chamber profile, Anthracite grey (both sides)
Roof cover	Elevate's RubberGard™ EPDM, 1.14mm thick, fully adhered system
Exterior trim	Natural Pine/Spruce trim, sanded to a smooth finish Low-maintenance Thermowood Pine/Spruce trim, sanded to a smooth finish (optional) T&G Low-maintenance Iron Sulphate coated Larch timber cladding (optional)
Breathable membrane	DuPont™ Tyvek® Housewrap
Exterior sills	Steel, Anthracite grey
Parapet Flashing	Steel, Anthracite grey
Interior covering / Flooring / Skirting / Interior sills	-
Foundation (not included)	Any type of foundation can be used: Concrete Pad / Concrete Base / Ground Screw / etc.
Water Supply and Sewerage, Electrical installation, HVAC (not included)	Any type of Water Supply /Sewerage, Electrical installation, HVAC systems must be done ensuring local requirements