

LIME ANNEXE

This charming 3-bedroom, 1-bathroom annex offers 84 m² of cozy living space, with a spacious living room, integrated kitchen, and adaptable bedrooms.



Product Name	LIME
Category	Annexe
Size	W 20.7x5.4m H 4.9m
Roof area	111.8 m ²
Living space	83.9 m ²
Insulation	Insulated A+ SIPS 174mm SIPS 224mm
Product type	Self Build KIT



EXCELLENT INSULATION

The insulation capacity is elevated by up to 50% compared to conventional building materials



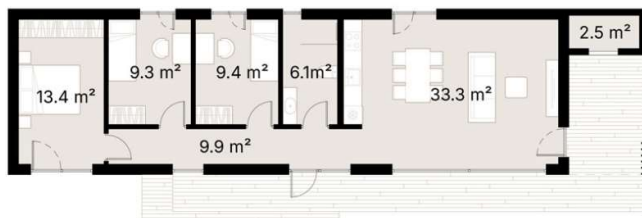
PREMIUM MATERIALS

Our KITS are comprised of top-tier components and materials, ensuring superior quality and finishes



SUSTAINABILITY

Our KITS are made from renewable materials and produce less waste than traditional construction methods



Welcome to this delightful 3-bedroom, 1-bathroom annex, offering 84 m² of cozy and functional living space. Ideal for families, couples, or individuals seeking a well-designed residence.

The 33.3 m² living room is the heart of the home, featuring expansive windows that allow natural light to flood the space and create a seamless flow to the outdoors. The integrated kitchen enhances the open layout, making it perfect for daily use and informal gatherings.

Each of the three bedrooms offers comfort and flexibility, with the master bedroom providing a spacious 13.4 m² retreat. The additional bedrooms can easily adapt to the needs of guests, children, or serve as a home office.

The single bathroom is conveniently located and well-designed to meet your daily needs. This home combines style and functionality, providing a comfortable and adaptable living environment.

Blending style with practicality, this home provides a comfortable and adaptable living environment, perfect for various lifestyles. Whether you're seeking a peaceful retreat, a productive workspace, or a cozy family home, this residence delivers an exceptional living experience.

SPECIFICATION

Dimensions	W 20.7x5.4m H 4.9m
Category	Annexe
Roof area	111.8 m ²
Living space	83.9 m ²
Exterior Walls	SIPS 174mm, EPS Carbon treated, 0,031 W/mK, OSB3
Roof structure	SIPS 224mm, EPS Carbon treated, 0,031 W/mK, OSB3
Internal walls	-
Windows / doors	PVC Double-glazed, 6-chamber profile, Anthracite grey (both sides)
Roof cover	Metal roofing including fasteners and steel guttering, Anthracite grey
Exterior trim	Natural Pine/Spruce trim, sanded to a smooth finish Low-maintenance Thermowood Pine/Spruce trim, sanded to a smooth finish (optional) T&G Low-maintenance Iron Sulphate coated Larch timber cladding (optional)
Breathable membrane	DuPont™ Tyvek® Housewrap
Exterior sills	Steel, Anthracite grey
Parapet Flashing	-
Interior covering / Flooring / Skirting / Interior sills	-
Foundation (not included)	Any type of foundation can be used: Concrete Pad / Concrete Base / Ground Screw / etc.
Water Supply and Sewerage, Electrical installation, HVAC (not included)	Any type of Water Supply /Sewerage, Electrical installation, HVAC systems must be done ensuring local requirements